

Kinsmen Group

How-To Guide

Global Publisher Queue

Date: October 20, 2023





Table of Contents

Introduction	1
Process	2
Testing.....	5



Introduction

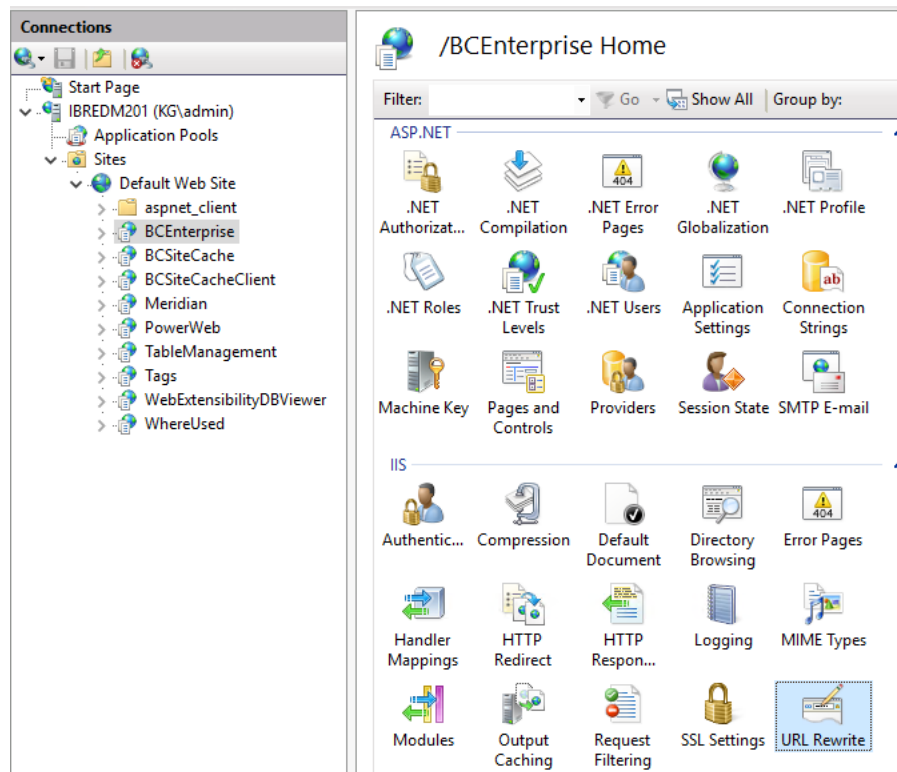
Fix MPS-32566 released with Meridian 2021 R2 introduced a change to the Publisher Queue, so that when accessed from Power User or Power Web it only displays records for the current vault. Since some customers may prefer the old behavior of showing all records in the queue this document describes a workaround to change this.

The process involves adding a configuration change to IIS to rewrite the incoming URL, removing the vault specific portion of the query string, this is detailed in the sections below.



Process

1. Connect to the Enterprise server using a remote desktop client.
2. Open **Internet Information Services (IIS) Manager**.
3. In the **Connections** Pane, expand <Server Name>/Sites/Default Web Site and click on **BCEnterprise**.
4. Double click on **URL Rewrite**.



5. In the **Actions** pane, click **Add Rule(s)**.
6. In the **Add Rule(s)** dialog select **Blank Rule** under **Inbound Rules** and click **OK**.
7. In the **Name** text box, enter a name that will uniquely identify the rule, for example "Publisher Queue Fix".
8. In the **Match URL** section, enter the following regular expression pattern:

`^config.aspx$`

9. Expand **Conditions** and add a new condition with the following match pattern:

`MOD=PUBQ&context(.*)`



Ensure that **Ignore case** is selected.

10. In the **Action** section, select the **Redirect** action type and enter the following redirect URL:

`/BCEnterprise/config.aspx?MOD=PUBQ`

Ensure that **Append query string** is deselected.

11. Click **Apply** and then **Back to Rules**.
12. The completed rule show look like this:

URL Rewrite

Provides rewriting capabilities based on rules for the requested URL address and the content of an HTTP response.

Inbound rules that are applied to the requested URL address:

Name	Input	Match	Pattern	Action Type	Action URL	Stop Proce...	Entry Type
PubQ	URL path after '/BCEnterprise/'	Matches	^config.aspx\$	Redirect	/BCEnterprise/...	True	Local
	{QUERY_STRING}	Matches the Pattern	MOD=PUBQ&context(*)				

Adding the rule through this method should result in the following section being added to the system.webserver section in the web.config file under C:\inetpub\wwwroot\BCEnterprise:

```
<rewrite>
  <rules>
```



```
<rule name="PubQ" stopProcessing="true">
    <match url="^config.aspx$" />
    <action type="Redirect"
url="/BCEnterprise/config.aspx?MOD=PUBQ" appendQueryString="false"
logRewrittenUrl="true" />
    <conditions>
        <add input="{QUERY_STRING}"
pattern="MOD=PUBQ&context(.*)" />
    </conditions>
</rule>
</rules>
</rewrite>
```

The change will be immediate, no restarting of IIS is necessary.



Testing

To test the completed rule, open a web browser and navigate to:

<https://<enterprise server name>/BCEnterprise/config.aspx?MOD=PUBQ&context=UCB>

The browser should automatically redirect to:

<https://<enterprise server name>/BCEnterprise/config.aspx?MOD=PUBQ>